



CALL FOR PAPERS

N-OF-1

METHODS OF INFORMATION IN MEDICINE

FOCUS THEME: Single Subject Research Design And Data Processing

GUEST EDITORS

Mark Drangsholt
drangs@uw.edu

Martijn de Groot
ma.de.groot@pl.hanze.nl

Fernando Martin-Sanchez
fem2008@med.cornell.edu

Gary Wolf
gary@quantifiedself.com

EDITOR-IN-CHIEF

Sabine Koch, PhD
Health Informatics Centre,
LIME
Karolinska Institutet
Stockholm, Sweden
ed@MethodsInfMed.org

SUBMISSION DEADLINE
NOVEMBER 20, 2016

High quality, original manuscripts will be subject to a rigorous peer review process.

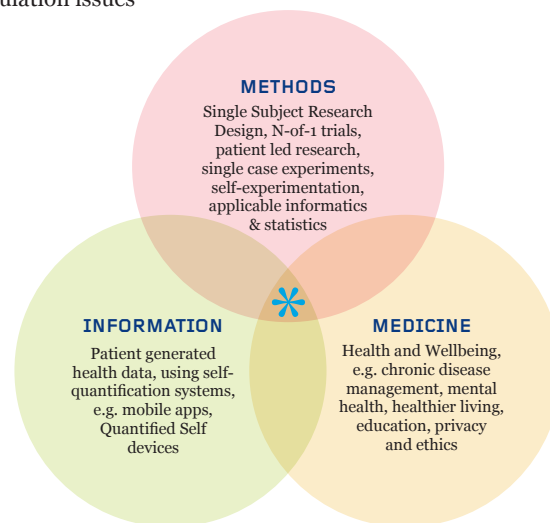
Submissions must follow the submission guidelines of Methods of Information in Medicine, available at:

<http://methods.schattauer.de/en/authors/manuscript-submission.html>

Scientific progress in medicine and public health during the last century has been dominated by studies performed with groups of people. Today, thanks in part to advances in computing and information technology, many people collect data to help investigate a health problem, make progress towards a goal, or simply because we are curious. Such investigations need not be conducted on groups. Often, they involve just a single person who is both the subject and the investigator. They are “N-of-1” trials, where data are generated by the individual, normally making use of self-quantification systems, including mobile apps and portable monitoring devices. This focus theme of “Methods of Information in Medicine” on single subject research encourages submission of original articles describing data processing and research methods using a “N-of-1” design where the questions and analysis are guided by the interests and participation of the subject. We encourage submissions that focus on challenges and questions involving data collection, processing, integration, analysis and visualization in the context of single subject research.

AREAS OF FOCUS MAY INCLUDE, BUT ARE NOT LIMITED TO:

Personal health and well-being * Chronic disease management * Mental health * Autonomous self-experimentation in the context of health and well-being * Health education and autodidactic learning * Privacy, ethics and regulation issues



EXAMPLE METHODS AND TECHNOLOGIES THAT ARE RELEVANT INCLUDE, BUT ARE NOT LIMITED TO:

IT infrastructures for Single-Subject-Research trials * Aggregating data from multiple sensors * Ontologies and knowledge representation * Integrating N-of-1 data with other clinical information systems (health records, decision support) * Data analysis and visualization * Data quality, metadata and annotation aspects

WE ENCOURAGE SUBMISSIONS IN THE FORM OF:

- Original contributions of individual or a series of N-of-1 trials.
- Original contributions with Single Subject Research Design, Single Case Experimental Design or Patient Led Research Design
- Original contributions on methodological aspects of informatics and statistics applied to N-of-1 trials.
- Reviews in the field of Single Subject Research Design and data processing of patient generated data
- Perspective and opinion papers